

Teign Estuary Trail

Newton Abbot to Teignmouth

Public Consultation

17th November – 18th December 2020

Have Your Say



Introduction

This document provides information on the current design for the multi-use Teign Estuary Trail between Newton Abbot and Teignmouth. It summarises the design and the need for the proposal, provides information and explains how you can give your views during the public consultation. We would like to hear your feedback about the alignment of the trail and the proposals described below.

Background

The Teign Estuary Trail is a key missing link in Devon's active travel network and is an important scheme for investment. The Teign Estuary Trail seeks to complete the missing link in the strategic active travel network between Newton Abbot and Teignmouth. Connecting Dawlish, Teignmouth and Newton Abbot through the extension of the Teign and Exe Estuary Trails would form a national showcase, supporting leisure as well as local trips, and providing economic and health benefits.

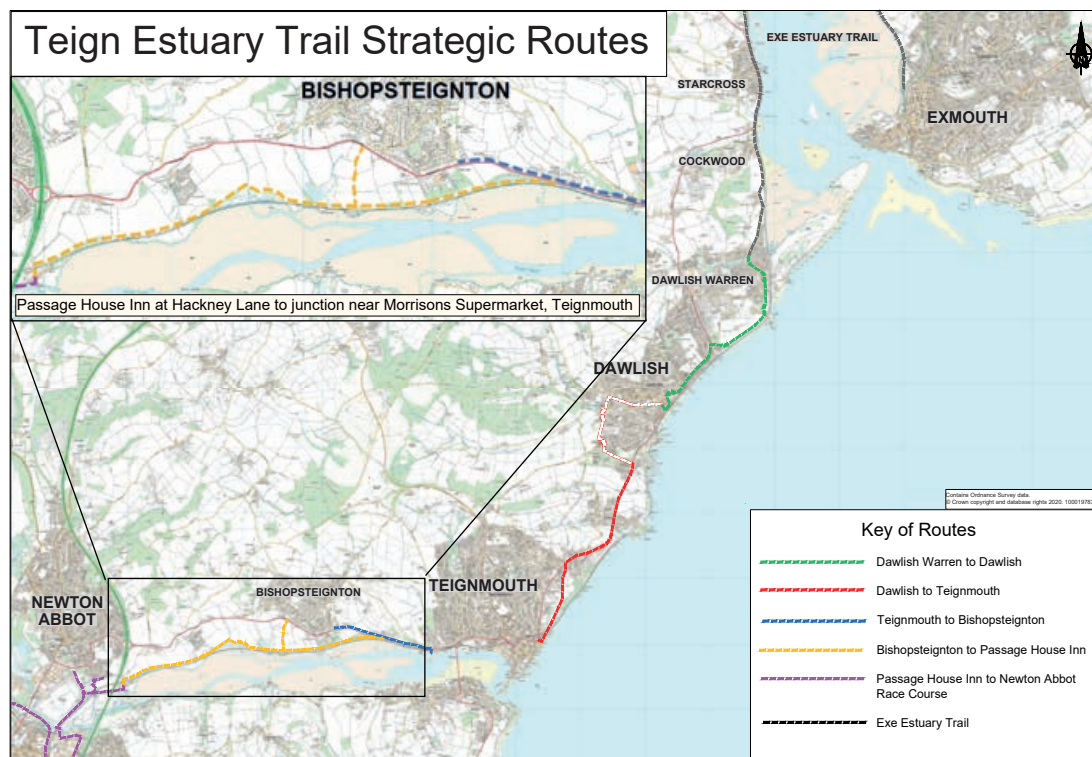
The Teign Estuary Trail has been a long-term aspiration for Devon County Council and the current strategy seeks to deliver the route incrementally. Some sections have already been delivered, whilst design work has continued to progress on the outstanding sections. In March 2019, Devon County Council and Teignbridge District Council each committed funding to progress a planning application between the Passage House Inn on Hackney Lane in Newton Abbot and the junction near Morrisons Supermarket, located southeast of Bishopsteignton on the western fringe of Teignmouth.

Previous public engagement reflects the strong local desire for improved active travel opportunities along this corridor. The

local authorities are continuing to engage with partners and the local community in order to progress the trail. The aspiration for the completion of the route is reflected in several local policy documents, including the Teignbridge Local Plan, Teignbridge Infrastructure Delivery Plan, Devon County Council's Cycling and Multi Use Trail Network Strategy and Devon County Council's Transport Infrastructure Plan.

Scheme Objectives

1. To provide a strategic multi-use connection between Newton Abbot and Teignmouth, addressing the missing link of the National Cycle Network Route 2
2. To promote recreation and leisure trips with increased access to the natural environment and supporting local tourism
3. To promote sustainable travel as an alternative mode of transport, providing health and well-being benefits to local communities and supporting carbon net zero aspirations
4. To optimise the amenity value of the Teign Estuary Trail and the enjoyment of the Teign Estuary
5. To develop and maintain the Teign Estuary Trail in a manner which conserves and enhances the environment, whilst limiting adverse impacts
6. To improve the safety of non-motorised users travelling between Newton Abbot and Teignmouth



This map shows the different route sections of the Teign Estuary Trail.

Design Process

Various alignments to connect Passage House Inn with Teignmouth have been considered, with the design undergoing multiple iterations to balance the various environmental and societal impacts. These have included maintaining a safe distance from the railway, minimising ground and construction works, and limiting the impacts on landowners' land.

South of the Railway

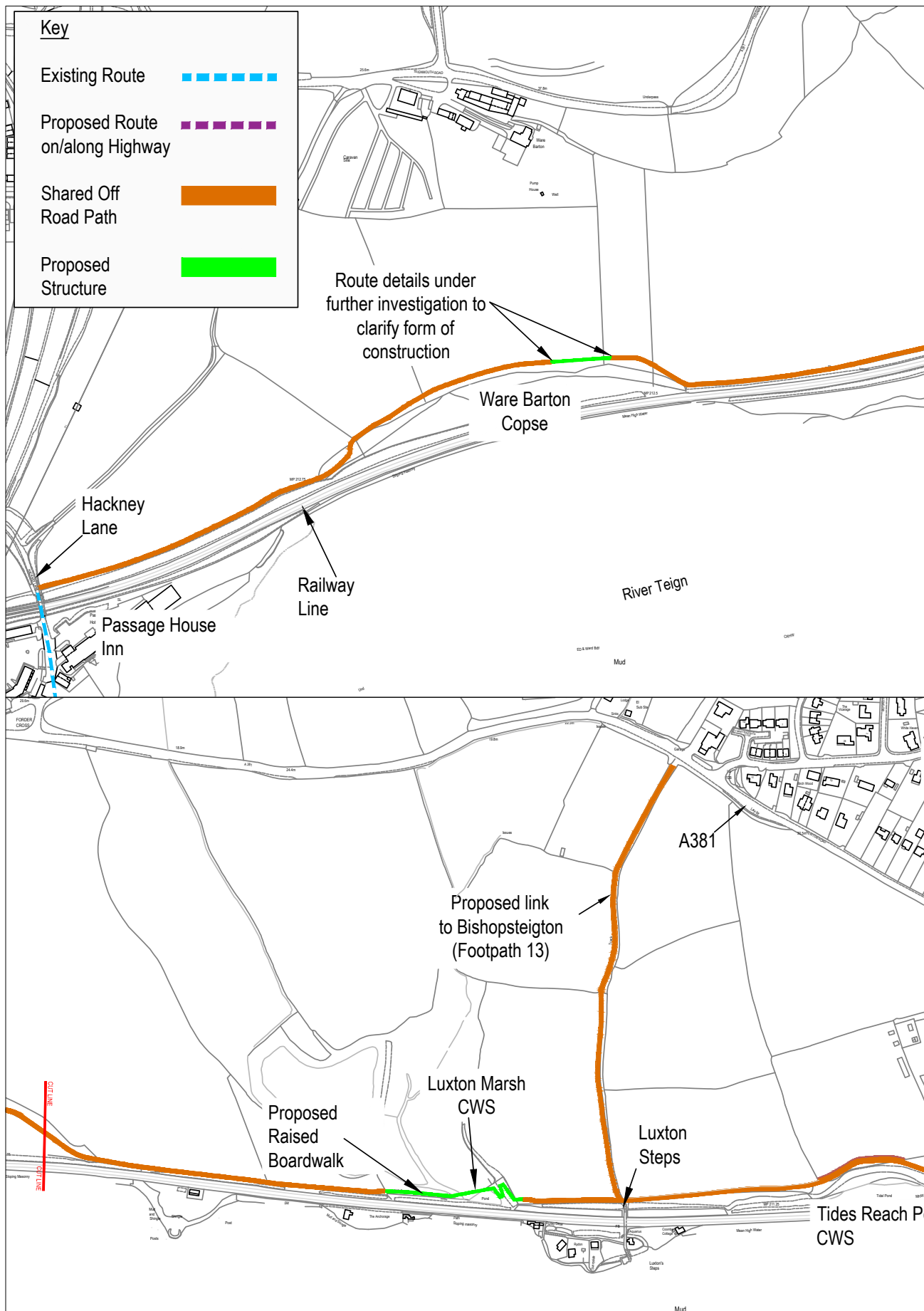
The feasibility of delivering a route parallel to the estuary and south of the railway has been considered. However, these designs have not been progressed due to significant constraints being identified associated with construction within the estuary, including flood risk, the effects of climate change and sea level rise, related maintenance liabilities and the significant ecological impacts on the County Wildlife Sites and species living on the estuary.

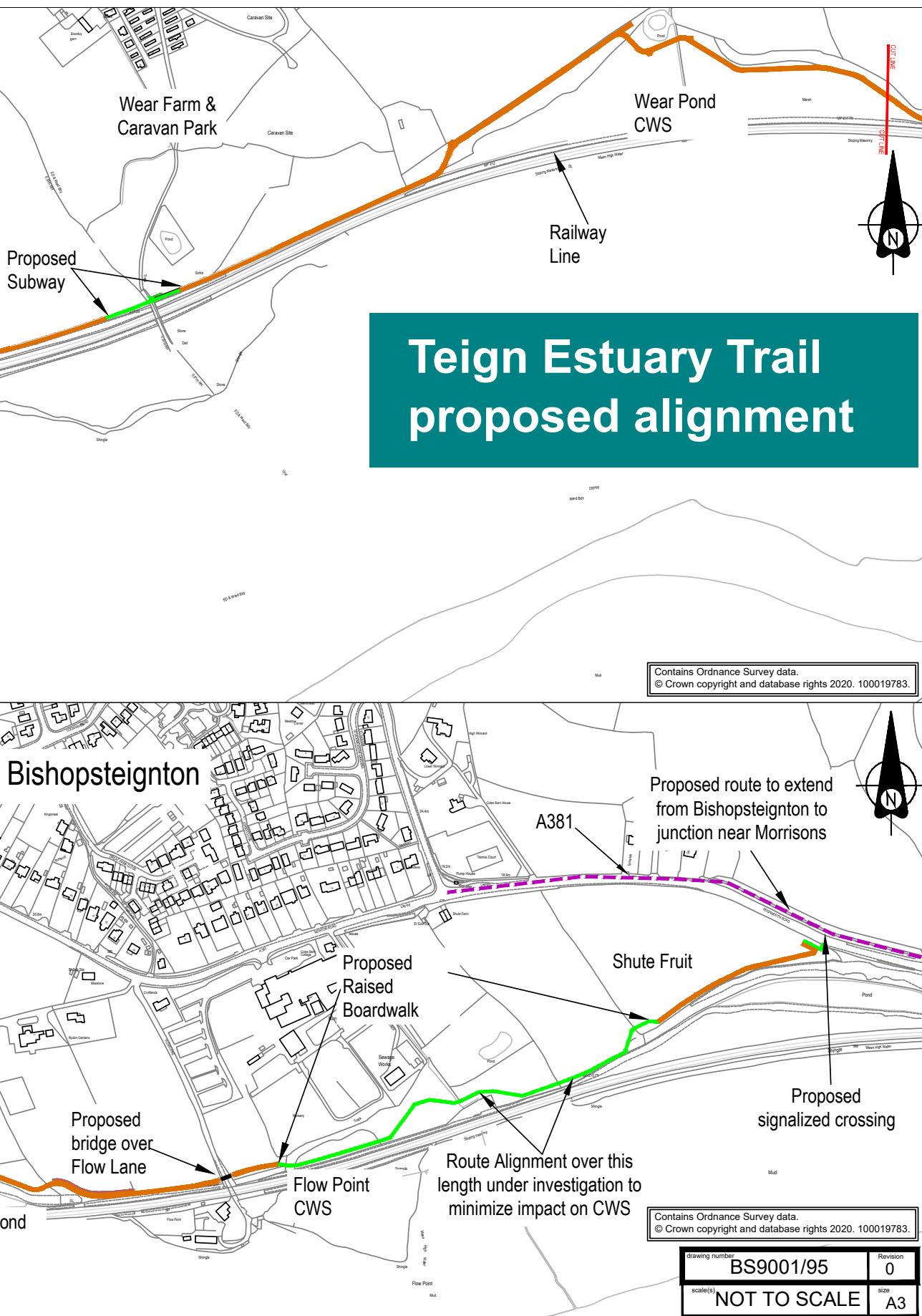
Proposed Scheme

The proposed multi-use trail will be built on land adjacent to the estuary and north of the railway between Passage House Inn and Bishopsteignton. The trail will then deviate from the railway line and join the A381 at La Roche Maurice Walk approximately 400m east of Church Road. From that point until the junction near Morrisons, Teignmouth, it is proposed to provide a shared path along the north side of the A381. The entirety of the multi-use trail will be at least 3m wide and 5 km long. There is more detail provided in the alignment plan in the middle.

The majority of the trail is largely located in open agricultural land with some short stretches crossing County Wildlife Sites (CWS) and Unconfirmed Wildlife Sites. The trail is designed to have a bound surface and follow contours as closely as possible, to reduce gradients.

New fencing and boundary treatments are proposed alongside the path to increase safety and privacy and reduce the likelihood of trespass onto adjacent land.





Impacts and Mitigation

The design has been developed to achieve an optimal balance between maximising benefits and achieving the scheme objectives of developing and maintaining the Teign Estuary Trail in a manner which conserves and enhances the environment, promotes safe and sustainable travel and increases amenity value, whilst limiting any adverse impacts. Below are some of the key matters considered while developing the proposed design of the scheme.

Landowners

Several landowners will be directly affected where the trail will be constructed over their land. These landowners have been engaged throughout the scheme design with their local knowledge included. The alignment accommodates their concerns where possible and negotiations and engagement are ongoing.

Network Rail

At three locations, it is proposed to build the trail on Network Rail land in order to reduce the impact on productive agricultural land. Fences along the railway will be 1.8m high weld mesh but will vary based on the distance from the trail. Fences that retain good visibility are proposed to maintain outward visibility, minimise the impression of being enclosed and discourage anti-social behaviour.

Environment

The trail will be located on the largely undeveloped coast of the Teign Estuary. This tidal section of the Teign river is in a stunning landscape rich in wildlife and contains several sites of local ecological significance. Very careful consideration has been given to the design and the alignment of the trail in order to conserve and enhance the environment, whilst limiting any adverse



Exe Estuary Trail, Powderham

impacts. The design seeks to minimise impacts on environmentally sensitive areas such as County Wildlife Sites along the proposed trail, which are designated for their high value habitat and contain lagoons, priority mudflat, reedbed and saltmarsh habitat. Where impacts are unavoidable, the precise alignment has been selected to avoid the most valuable ecological habitats and communities.

Several mature, veteran trees and group of trees were identified as important landscape features, these are locally significant for wildlife and are considered of high value. Wherever possible these have been avoided. No veteran or mature trees are proposed to be removed, except for some Ash trees for safety reasons due to the Ash Dieback disease. Any vegetation removed as a result of the construction of the trail will be replanted on site where habitat connectivity or habitat mitigation are required.

When it is not possible to compensate for the loss of habitat on site and in order to meet the required 10% biodiversity net gain, offsite planting and habitat creation will be provided in the local area. Suitable approaches to mitigation and compensatory provision will be demonstrated through the planning application

stage in order to meet local and national planning policy requirements.

The general topography in the area is open agricultural land sloping down from north to south towards the Teign Estuary. Several watercourses drain water from the land into lagoon areas or pass via culverts under the railway into the Teign Estuary.

At these locations the trail will either bridge over the watercourses or pass on boardwalk structures over lagoons and low-lying marshy areas. Care has been taken over the levels of the route to address concerns over global warming and flood zones. At locations on the edge of or adjacent to flood zones, escape routes for users will be identified to accommodate adverse weather conditions. Designs have been discussed with the Environment Agency.

Numerous undesignated historical features have been identified along the railway and proposed trail. Further local archaeological investigation may be required prior to construction to mitigate potential cultural heritage impacts.

Sustainability

Greenhouse gases will arise from the construction phase where the main contributors will be the production of new material and the movement of material and equipment to and from the site. This can be mitigated by maximising the material re-used on the site, the use of new materials with high recycled content, good durability, and sourcing suppliers and waste facilities as close to the site as possible. In the operational phase, once the trail is open for use, there will be no greenhouse gas contribution to the environment as the trail will be used by pedestrians, cyclists and mobility scooter users.

This trail will provide the opportunity for people to safely travel actively between Newton Abbot, Bishopsteignton and Teignmouth. Currently such an opportunity does not exist, as there

is no safe, convenient or direct non-motorised user access between these locations. It will also encourage people to use active travel whilst accessing the natural environment, which will improve mental and physical health.



Exe Estuary Trail

Local Transport Network

The Teign Estuary Trail is vital to link to local sustainable travel opportunities as well as contribute to the strategic cycle connectivity along the National Cycle Network Route 2 and onward links towards Dartmoor via Newton Abbot. The alternative sustainable travel options are approximately three trains an hour, the '2' bus every half hour and the '184' bus four times a day along the A381. The A381 is a busy road that carries approximately 15,000 vehicles per day between Bishopsteignton and Teignmouth, with up to 40 mph speed limit and narrow verges. Footways are only available between Bishopsteignton and Teignmouth. This is not an attractive route for pedestrians, cyclists or mobility scooter users. The proposed trail improves connectivity and complements the existing sustainable transport opportunities, with the potential for travel via public transport one way and utilising the Teign Estuary Trail the other way.

Share Your Views

Public consultation is being held between 17 November and 18 December 2020 to seek the view of the public on the scheme proposals. This aims to obtain feedback on the scheme design and route strategy to incorporate into a planning application and to provide information on the project's next steps.

There are several ways to provide feedback on this consultation:

- Give feedback directly to a member of the project team at one of the consultation events
- Complete the online feedback form on the website:
devon.cc/teignestuarytrail
- Request a paper questionnaire

Computers with internet access are available at all Devon libraries. Please check current opening arrangements.

Return paper questionnaires by scanning or photographing and emailing it to:
transportplanning@devon.gov.uk
or posting it to: **Transport Planning, Matford Offices, County Hall, Topsham Road, Exeter, EX2 4QD**

If you require more information, or a different format, please phone **0345 155 1004**, email **transportplanning@devon.gov.uk** or write to the above address.

Consultation Events

Members of the project team will be in attendance at the following online events:

- Consultation Webinar:
25th November, 6pm-8pm
A short presentation covering the scheme proposals by the project team, followed by a 'question and answer' session
- Virtual 'drop-in' consultation:
9th December, 5pm-7pm
An opportunity to join at any point during the two-hour window to talk to the project team

Both events will be hosted on Microsoft Teams, and will be accessible via the internet or by telephone.

Please contact the Transport Planning team to register for either event.

Phone: **0345 155 1004**

Email: **transportplanning@devon.gov.uk**

Post: **Transport Planning, Matford Offices, County Hall, Topsham Road, Exeter EX2 4QD**

Next Steps

Following the close of the public consultation on 18 December, the project team will review responses with the aim of establishing an understanding of the support for the proposals and any issues raised. These will then be included in the ongoing scheme design where possible, with a view to submitting a planning application in Spring/Summer 2021.

For more information on the Teign Estuary Trail please visit DCC's website:

devon.cc/teignestuarytrail